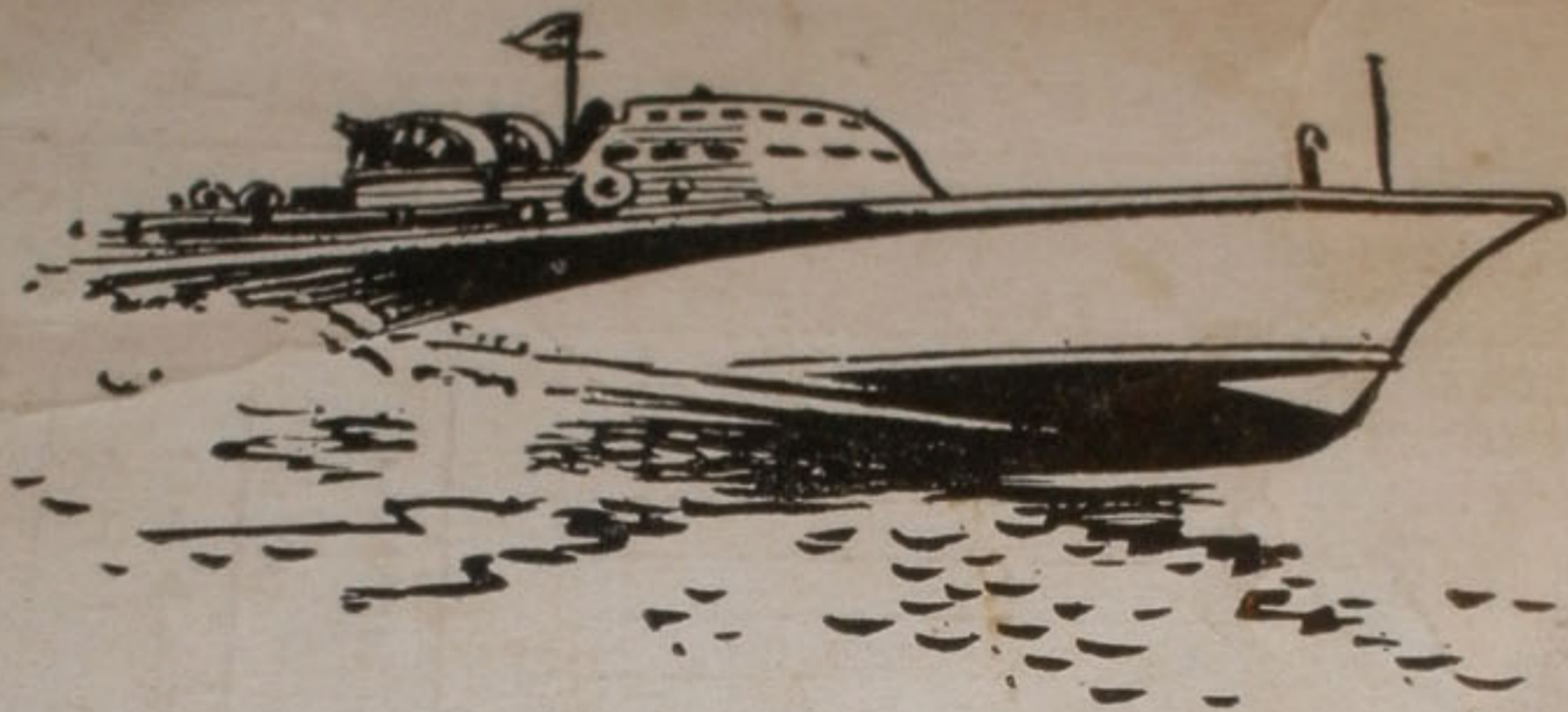


BUS SCHEDULE
BETWEEN
CAMP SHENANGO
AND
PITTSBURGH
AND INTERMEDIATE POINTS



CORRECTED TO
JULY 3, 1943



HARMONY SHORT LINE
PITTSBURGH, PA.

HARMONY SHORT LINE AND WEST RIDGE SERVICE

CAMP SHENANGO—MERCER—BUTLER—PITTSBURGH

Trip Numbers Indicates Days Operated War Time	801	803	805	807	809	811	813	815	817	819
	Dly AM	Dly AM	Dly AM	Dly AM	Dly PM	Dly PM	Dly PM	Dly PM	Dly PM	Dly PM
Camp Shenango, Lv	6 45	8 00	9 30	11 30	1 45	3 15	5 00	6 00	7 30	9 30
Post Headquarters										
Greenville, Lv	6 55	8 10	9 40	11 40	1 55	3 25	5 10	6 10	7 40	9 40
Mercer (Ebberts Ser. Sta.), Lv	7 25	8 40	10 10	12 10	2 25	3 55	5 35	6 35	8 10	10 05
Grove City, Lv	7 45	9 00	10 30	12 30	2 45	4 15	5 55	6 55	8 30	10 25
Slippery Rock, Lv	8 00	9 25	10 45	12 45	3 00	4 30	6 10	7 10	8 50	10 40
Butler, Lv	8 40	10 10	11 25	1 25	3 35	5 15	6 55	7 55	9 35	11 20
Harmony Short Line Terminal										
Pittsburgh, 210-10th St., Ar	9 55	11 25	12 35	2 35	4 45	6 30	8 10	9 10	10 45	12 30

PITTSBURGH—BUTLER—MERCER—CAMP SHENANGO

Trip Numbers Indicates Days Operated War Time	804	806	808	810	812	814	816	818	802	800
	Dly AM	Dly AM	Dly AM	Dly AM	Dly AM	Dly PM	Dly PM	Dly PM	Dly PM	Dly PM
Pittsburgh, 210-10th St., Lv	12 25	2 25	7 25	9 25	11 25	1 25	3 25	5 25	6 25	10 25
Harmony Short Line Terminal										
Butler, Lv	1 45	3 40	8 45	10 45	12 45	2 45	4 45	6 45	7 45	11 45
Slippery Rock, Lv	2 25	4 15	9 25	11 25	1 25	3 25	5 25	7 25	8 35	12 25
Grove City, Lv	2 40	4 25	9 40	11 40	1 40	3 40	5 40	7 40	9 00	12 40
Mercer (Ebberts Ser. Sta.), Lv	3 00	4 40	10 00	12 01	2 00	4 00	6 00	8 00	9 25	1 00
Greenville, Ar	3 30	5 10	10 30	12 30	2 30	4 30	6 30	8 30	9 55	1 30
Post Headquarters										
Ar Camp Shenango	3 40	5 20	10 40	12 40	2 40	4 40	6 40	8 40	10 10	1 40

A. M. time (12 00 midnight to 11 59 noon) is shown in light face type.
P. M. time (12 00 noon to 11 59 night) is shown in bold face type.

CAMP SHENANGO—NEW CASTLE—ELLWOOD CITY—PITTSBURGH

Indicates Days Operated War Time	Dly AM	Dly AM	Dly PM	Dly PM	Dly PM	Dly PM	Dly PM		
	Camp Shenango, Lv	6 40	10 10	1 45	3 45	5 30	8 10	10 10	
Post Headquarters									
East Street (Route 19), Lv	6 42	10 12	1 47	3 47	5 32	8 12	10 12		
Sharon, Lv	7 20	10 50	2 25	4 25	6 15	8 50	10 50		
Farrell, Lv	7 25	10 55	2 30	4 30	6 20	8 55	10 55		
New Castle, Lv	8 15	12 01	3 25	5 30	7 30	9 55	11 55		
Ellwood City, Lv	8 50	12 35	4 00	6 00	8 05	10 30	12 30		
Zelienople, Lv	9 13	12 58	4 23	6 25	8 28	10 53	12 53		
Pittsburgh Greyhound Term., Ar	10 30	2 10	5 45	7 35	9 45	12 15			
Harmony Short Line									
Pittsburgh, 210-10th St., Ar	10 25	2 15	5 40	7 30	9 40	12 10	2 05		

PITTSBURGH—ELLWOOD CITY—NEW CASTLE—CAMP SHENANGO

Indicates Days Operated War Time	Dly AM	Dly AM	Dly AM	Dly PM	Dly PM	Dly PM	Dly PM		
	Pittsburgh, 210-10th St., Lv	12 25	7 20	10 00	12 05	3 00	6 25	8 05	
Harmony Short Line									
Pittsburgh Greyhound Term., Lv		7 10	10 10	12 01	3 10	6 35	8 00		
Zelienople, Lv	1 35	8 27	11 22	1 22	4 22	7 47	9 17		
Ellwood City, Lv	1 55	8 55	11 45	1 45	4 45	8 10	9 40		
New Castle, Lv	2 35	9 35	12 30	2 30	5 30	8 55	10 30		
Farrell, Lv	3 17	10 26	1 21	3 21	6 21	9 46	11 21		
Sharon, Lv	3 35	10 45	1 35	3 35	6 35	10 05	11 35		
East Street (Route 19), Ar	4 03	11 13	2 03	4 03	7 03	10 33	12 03		
Post Headquarters									
Camp Shenango, Ar	4 05	11 15	2 05	4 05	7 05	10 35	12 05		

BUY WAR BONDS V . . .

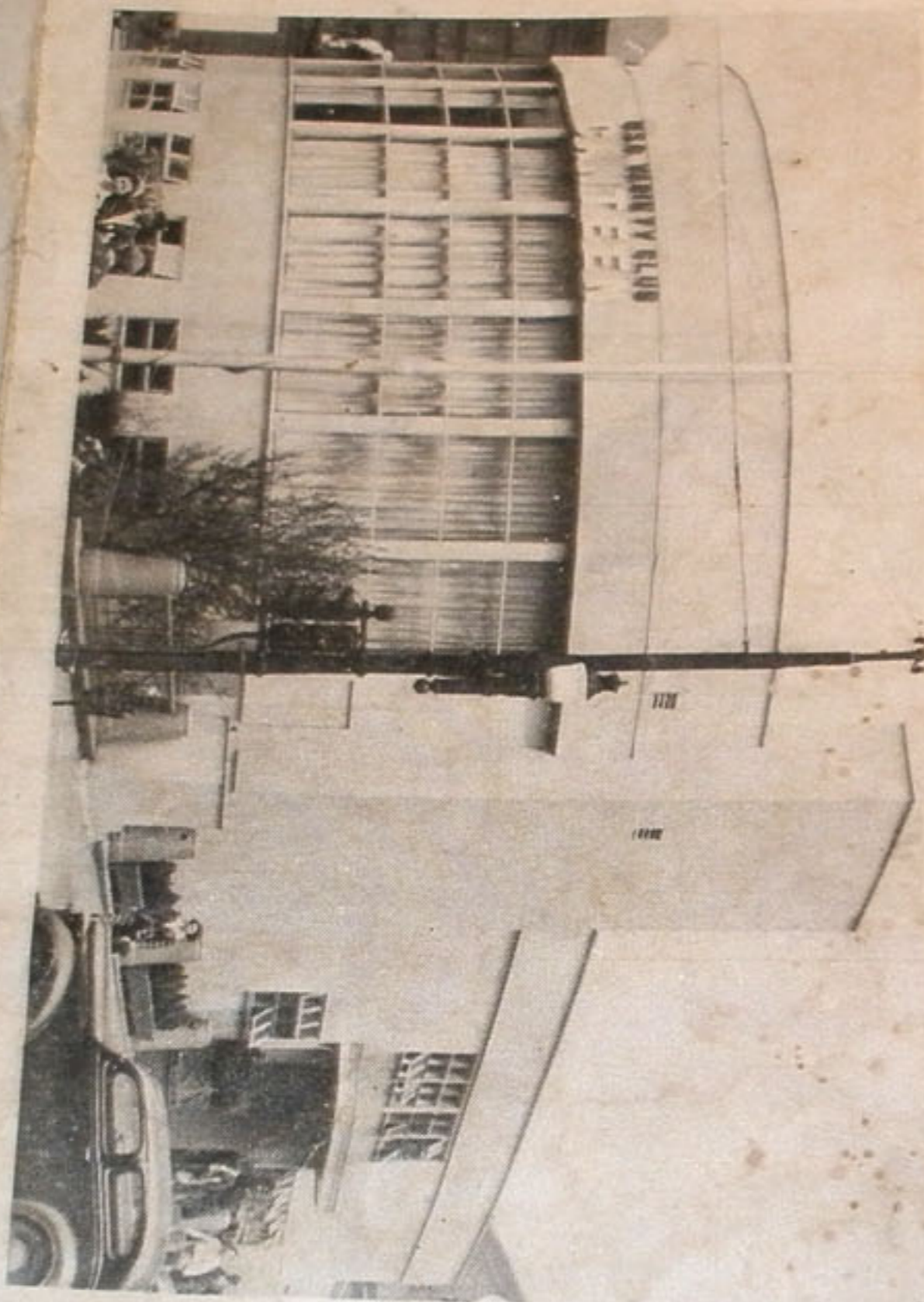
1943		AUGUST					1943
Su	Mo	Tu	We	Th	Fr	Sa	
1	2	3	4	5	6	7	
8	9	10	11	12	13	14	
15	16	17	18	19	20	21	
22	23	24	25	26	27	28	
29	30	31					

1943		SEPTEMBER					1943
Su	Mo	Tu	We	Th	Fr	Sa	
			1	2	3	4	
5	6	7	8	9	10	11	
12	13	14	15	16	17	18	
19	20	21	22	23	24	25	
26	28	28	29	30			

BASEBALL SCHEDULE

PITTSBURGH-PIRATES AT HOME 1943

August 26, 27 (N), 28, 29 (2)..... With Chicago
 August 30, 31 (N), Sept. 1..... With St. Louis
 September 17 (N), 19 (2)..... With Cincinnati
 September 22, 23, 24..... With Boston
 September 25, 26 (2)..... With New York
 September 28 (2), 29..... With Brooklyn
 October 2, 3..... With Philadelphia
 (N) Night Games. (2) Double-headers.



The Bulletin Index Photo

BUS SCHEDULE BETWEEN CAMP SHENANGO AND PITTSBURGH AND INTERMEDIATE POINTS



CORRECTED TO
JULY 3, 1943



HARMONY SHORT LINE
PITTSBURGH, PA.